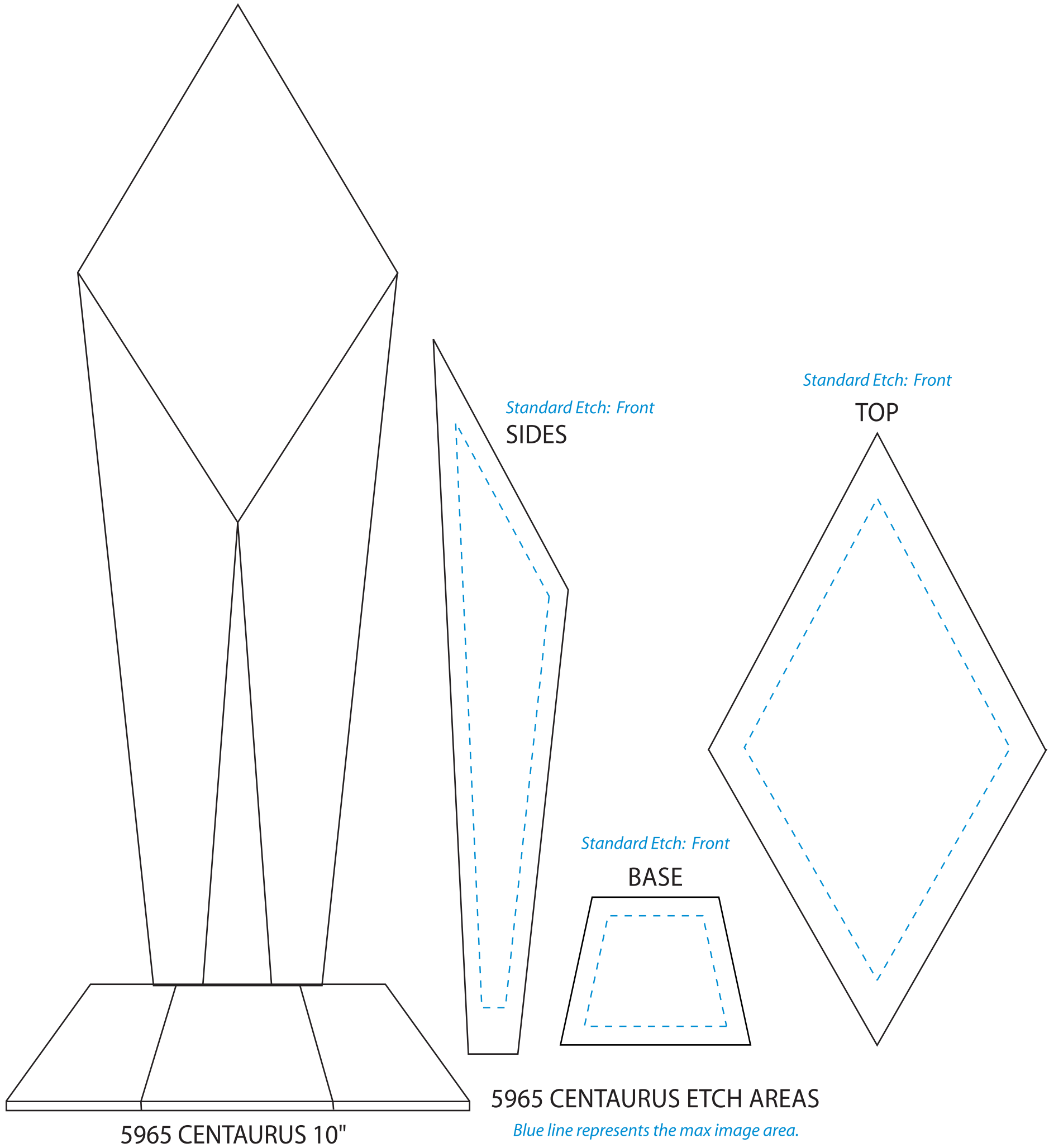


Product Name: CENTAURUS TOWER CRYSTAL AWARD

Scale 100%

Product Model: CD-5965

Product Size: 4.75" x 10.00" x 4.75"



**Artwork Information:**

All artwork must be in vector format (AI, EPS, PDF is recommended) (send AI in version CS5 or lower)  
 For sand etching, if fonts are under 12 pt font and lines less than 1 pt thickness  
 we cannot guarantee clean etching so please contact us if smaller font or line thickness is needed.  
 Any Logos and Text must be black & white line art only, no colors or grays can be etched.

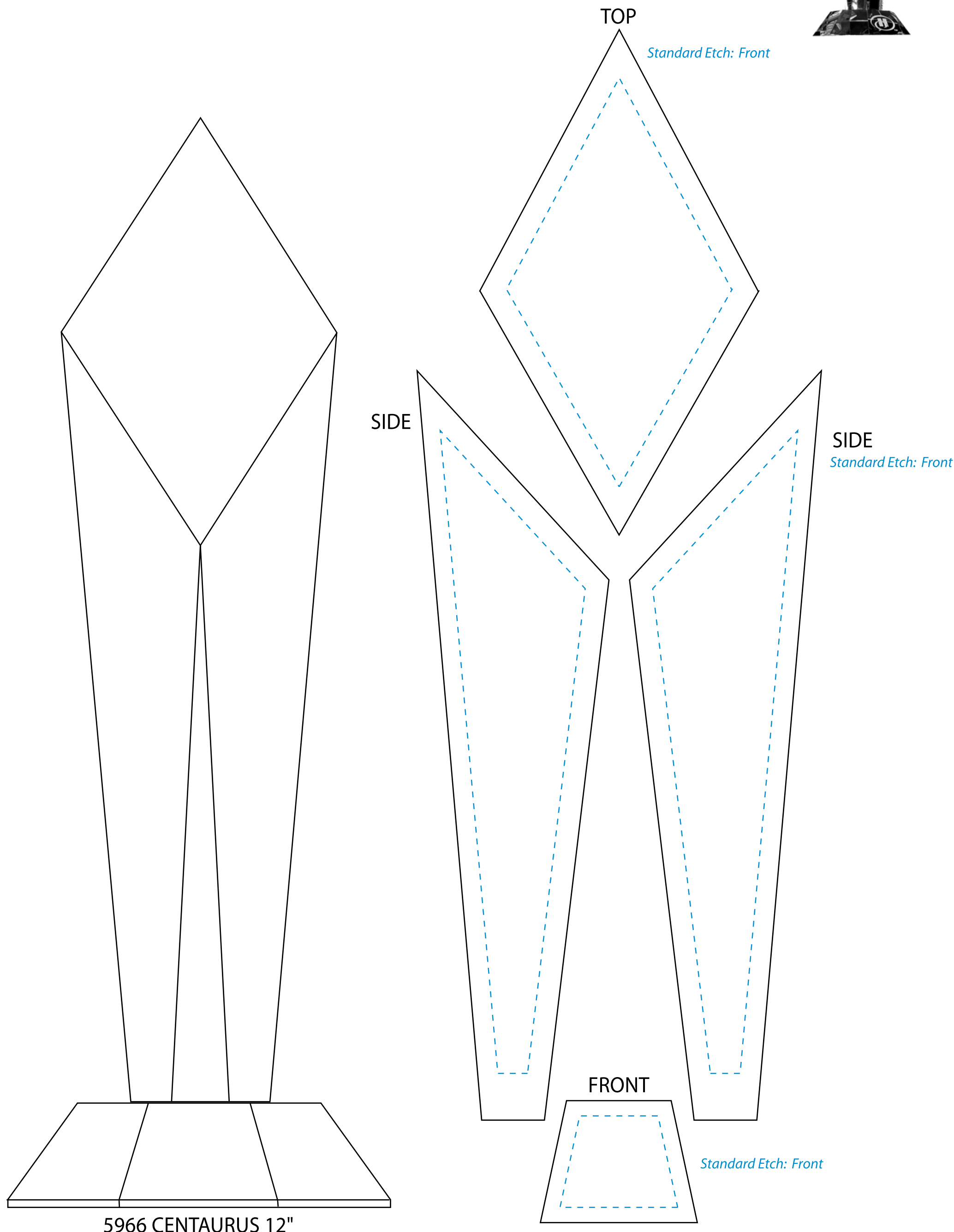
Please see more art guidelines under Artwork Details tab for each product.

Product Name: CENTAURUS TOWER CRYSTAL AWARD

Scale 100%

Product Model: CD-5966

Product Size: 4.75" x 12.00" x 4.75"



5966 CENTAURUS ETCH AREAS

*Blue line represents the max image area.*

**Artwork Information:**

All artwork must be in vector format (AI, EPS, PDF is recommended) (send AI in version CS5 or lower)  
 For sand etching, if fonts are under 12 pt font and lines less than 1 pt thickness we cannot guarantee clean etching so please contact us if smaller font or line thickness is needed.  
 Any Logos and Text must be black & white line art only, no colors or grays can be etched.

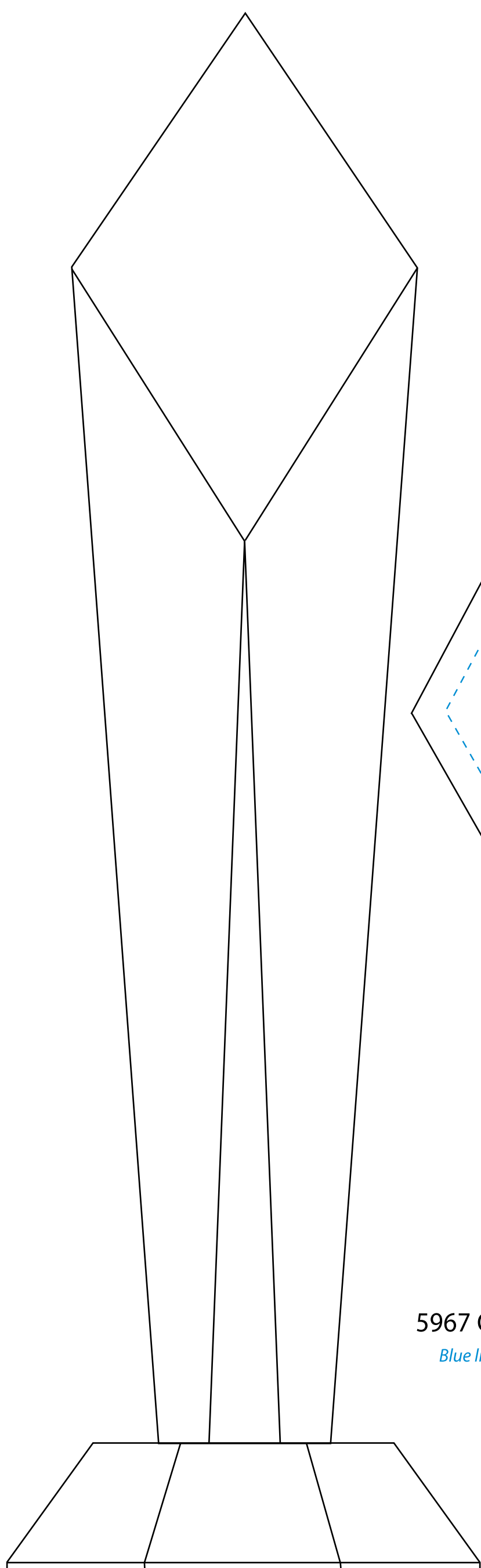
Please see more art guidelines under Artwork Details tab for each product.

Product Name: CENTAURUS TOWER CRYSTAL AWARD

Scale 100%

Product Model: CD-5967

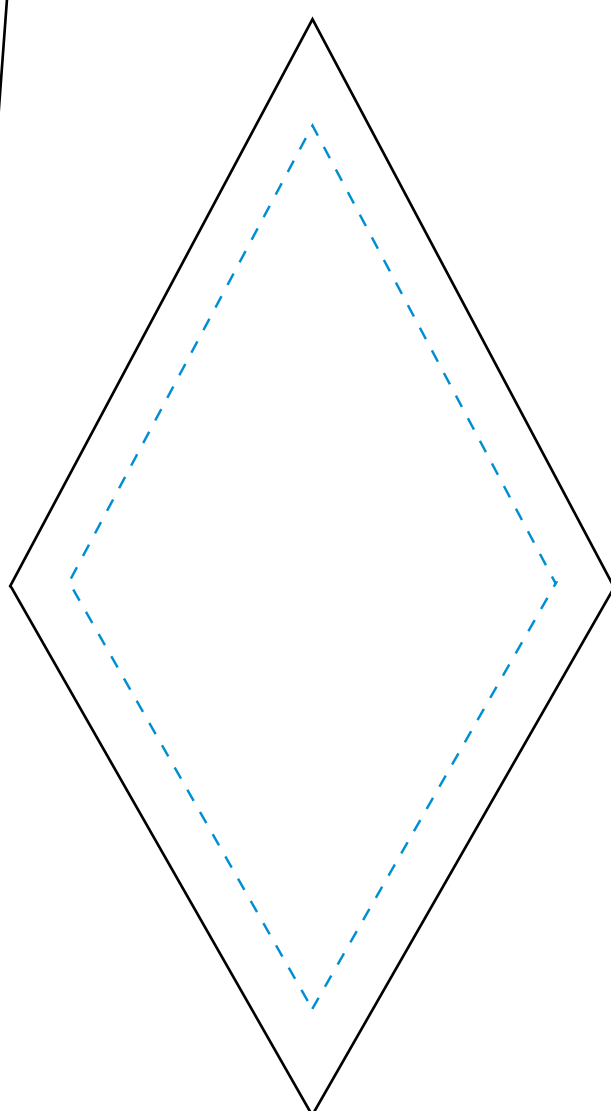
Product Size: 4.75" x 14.00" x 4.75"



5967 CENTAURUS 14"

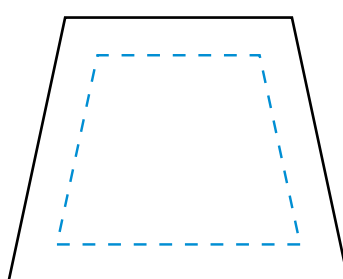
Standard Etch: Front

TOP



Standard Etch: Front

FRONT

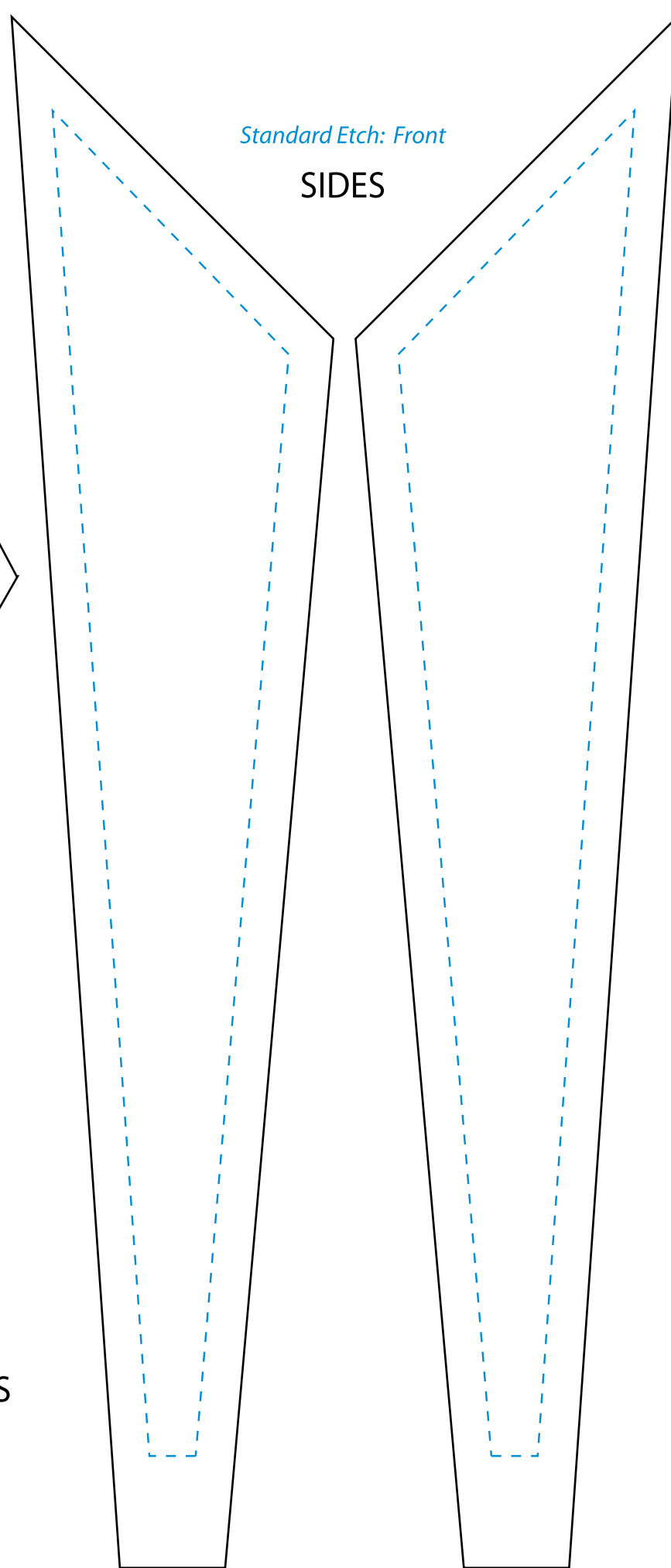


5967 CENTAURUS ETCH AREAS

Blue line represents the max image area.

Standard Etch: Front

SIDES



**Artwork Information:**

All artwork must be in vector format (AI, EPS, PDF is recommended) (send AI in version CS5 or lower)  
 For sand etching, if fonts are under 12 pt font and lines less than 1 pt thickness we cannot guarantee clean etching so please contact us if smaller font or line thickness is needed.  
 Any Logos and Text must be black & white line art only, no colors or grays can be etched.

Please see more art guidelines under Artwork Details tab for each product.