

Product Name: ENFIELD BOLT CRYSTAL AWARD

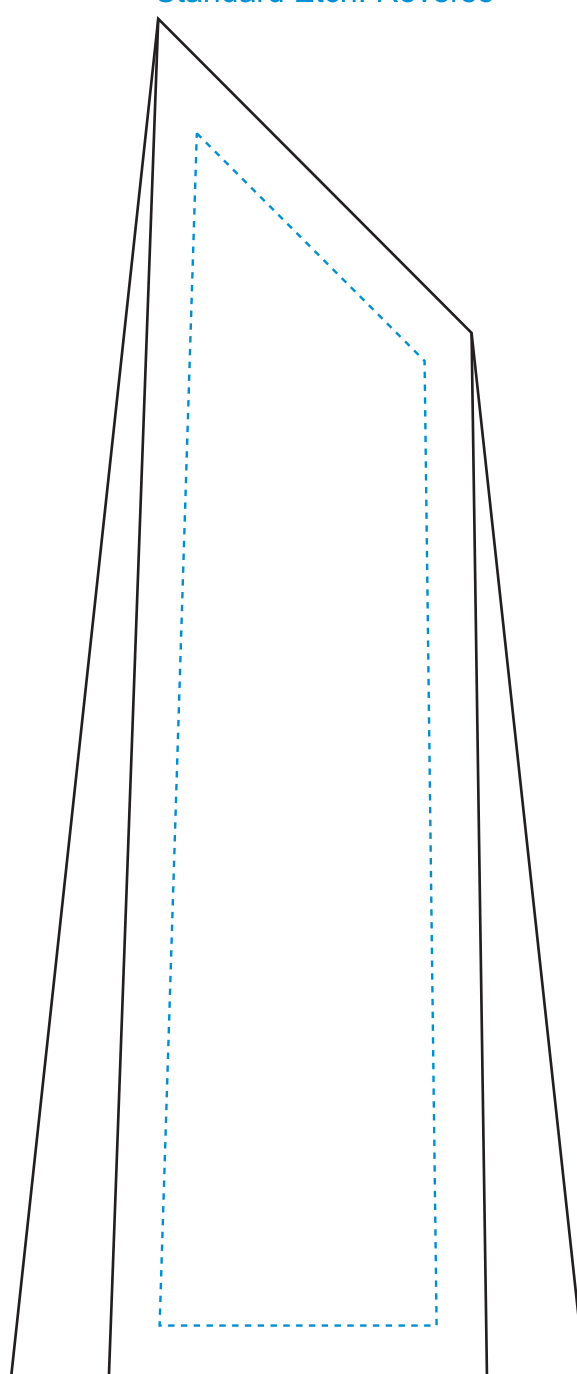
Scale 100%

Product Model: CD-3056

Product Size: 3.00" x 7.00" x 1.50"



Standard Etch: Reverse



3056 ENFIELD AWARD - 7"

Blue line represents the max image area.

Artwork Information:

All artwork must be in vector format (AI, EPS, PDF is recommended) (send AI in version CS5 or lower)
For sand etching, if fonts are under 12 pt font and lines less than 1 pt thickness
we cannot guarantee clean etching so please contact us if smaller font or line thickness is needed.
Any Logos and Text must be black & white line art only, no colors or grays can be etched.

Please see more art guidelines under Artwork Details tab for each product.

Product Name: ENFIELD BOLT CRYSTAL AWARD

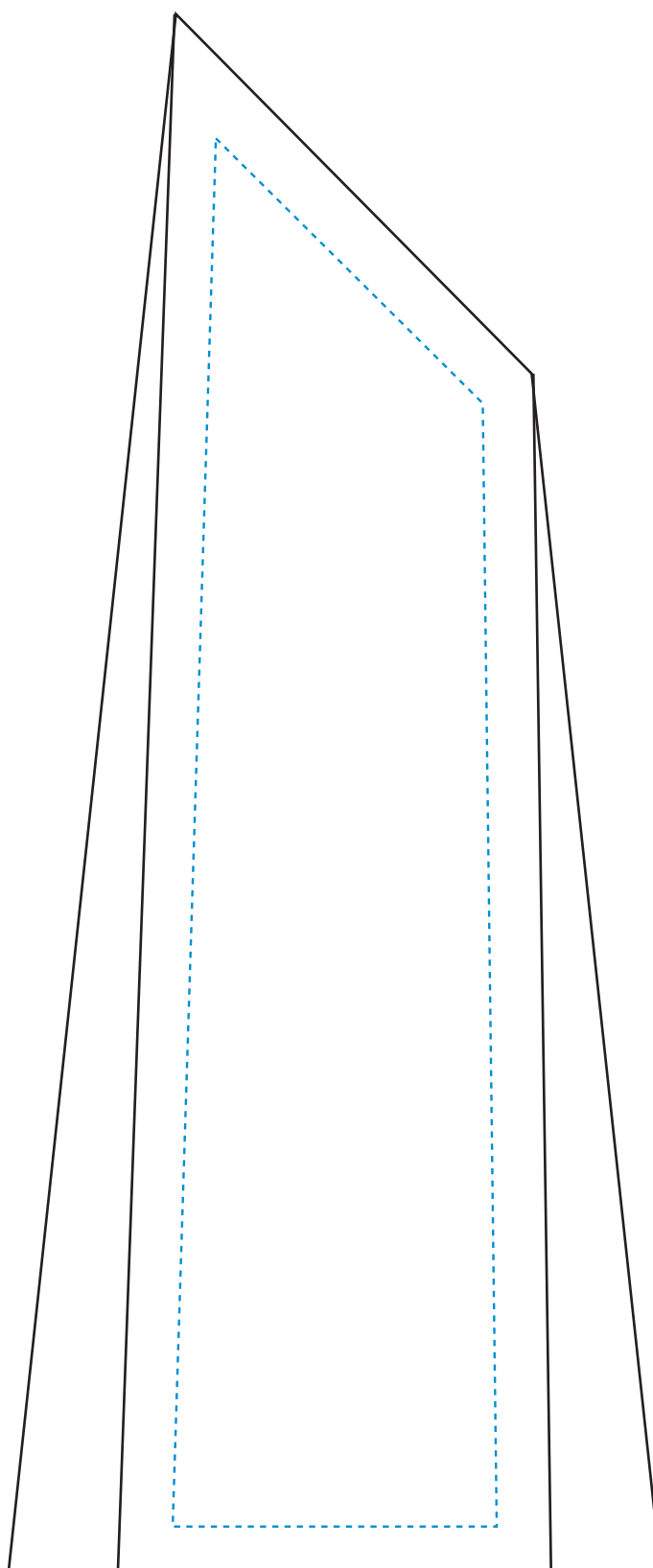
Scale 100%

Product Model: CD-3057

Product Size: 3.50" x 8.50" x 2.00"



Standard Etch: Reverse



3057 ENFIELD AWARD - 8.5"

Blue line represents the max image area.

Artwork Information:

All artwork must be in vector format (AI, EPS, PDF is recommended) (send AI in version CS5 or lower)
For sand etching, if fonts are under 12 pt font and lines less than 1 pt thickness
we cannot guarantee clean etching so please contact us if smaller font or line thickness is needed.
Any Logos and Text must be black & white line art only, no colors or grays can be etched.

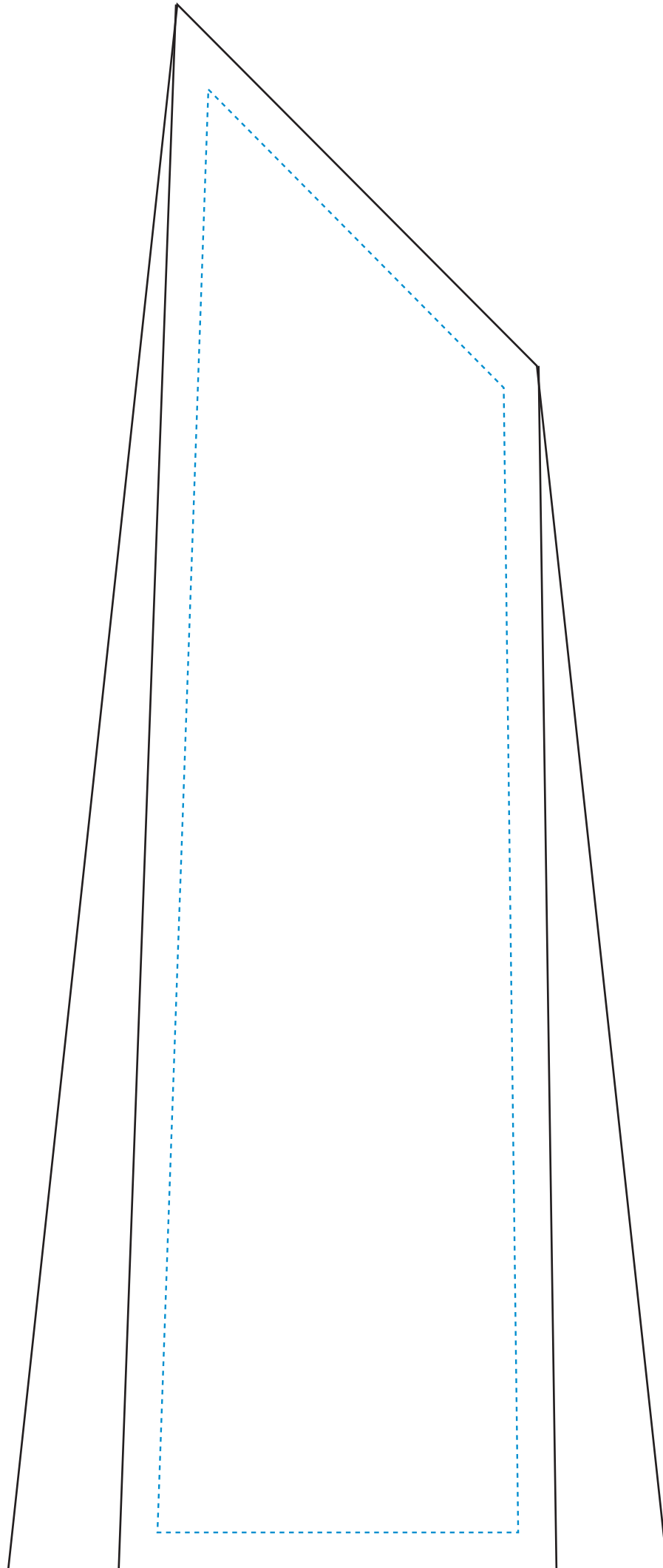
Please see more art guidelines under Artwork Details tab for each product.

Product Name: ENFIELD BOLT CRYSTAL AWARD
Product Model: CD-3058
Product Size: 4.75" x 11.00" x 2.25"

Scale 100%



Standard Etch: Reverse



3058 ENFIELD AWARD - 11"

Blue line represents the max image area.

Artwork Information:

All artwork must be in vector format (AI, EPS, PDF is recommended) (send AI in version CS5 or lower)
For sand etching, if fonts are under 12 pt font and lines less than 1 pt thickness
we cannot guarantee clean etching so please contact us if smaller font or line thickness is needed.
Any Logos and Text must be black & white line art only, no colors or grays can be etched.

Please see more art guidelines under Artwork Details tab for each product.